

**Glucose 6 phosphate isomerase Antibody**  
**Rabbit mAb**  
**Catalog # AP91708****Specification****Glucose 6 phosphate isomerase Antibody - Product Information**

Application	WB, IHC, FC, ICC
Primary Accession	<a href="#">P06744</a>
Clonality	Monoclonal
<b>Other Names</b>	
AMF; NLK; PGI; PHI; GNPI; SA-36; GPI;	
Isotype	Rabbit IgG
Host	Rabbit
Calculated MW	63147 Da

**Glucose 6 phosphate isomerase Antibody - Additional Information**

Dilution	WB~~1:1000 IHC~~1:100~500 FC~~1:10~50 ICC~~N/A
Purification	Affinity-chromatography
Immunogen	A synthesized peptide derived from human Glucose 6 phosphate isomerase
Description	Besides it's role as a glycolytic enzyme, mammalian GPI can function as a tumor-secreted cytokine and an angiogenic factor (AMF) that stimulates endothelial cell motility. GPI is also a neurotrophic factor (Neuroleukin) for spinal and sensory neurons.
Storage Condition and Buffer	Rabbit IgG in phosphate buffered saline , pH 7.4, 150mM NaCl, 0.02% sodium azide and 50% glycerol. Store at +4°C short term. Store at -20°C long term. Avoid freeze / thaw cycle.

**Glucose 6 phosphate isomerase Antibody - Protein Information**

**Name** GPI {ECO:0000303|PubMed:2387591, ECO:0000312|HGNC:HGNC:4458}

**Function**

In the cytoplasm, catalyzes the conversion of glucose-6- phosphate to fructose-6-phosphate, the second step in glycolysis, and the reverse reaction during gluconeogenesis (PubMed:<a href="http://www.uniprot.org/citations/28803808" target="\_blank">28803808</a>). Besides it's role as a glycolytic enzyme, also acts as a secreted cytokine: acts as an angiogenic factor (AMF) that stimulates endothelial cell motility (PubMed:<a href="http://www.uniprot.org/citations/11437381" target="\_blank">11437381</a>). Acts as a

neurotrophic factor, neuroleukin, for spinal and sensory neurons (PubMed:<a href="http://www.uniprot.org/citations/11004567" target="\_blank">11004567</a>, PubMed:<a href="http://www.uniprot.org/citations/3352745" target="\_blank">3352745</a>). It is secreted by lectin-stimulated T-cells and induces immunoglobulin secretion (PubMed:<a href="http://www.uniprot.org/citations/11004567" target="\_blank">11004567</a>, PubMed:<a href="http://www.uniprot.org/citations/3352745" target="\_blank">3352745</a>).

#### Cellular Location

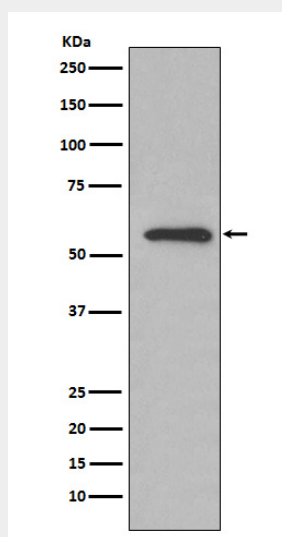
Cytoplasm. Secreted

### Glucose 6 phosphatase isomerase Antibody - Protocols

Provided below are standard protocols that you may find useful for product applications.

- [Western Blot](#)
- [Blocking Peptides](#)
- [Dot Blot](#)
- [Immunohistochemistry](#)
- [Immunofluorescence](#)
- [Immunoprecipitation](#)
- [Flow Cytometry](#)
- [Cell Culture](#)

### Glucose 6 phosphatase isomerase Antibody - Images



Western blot analysis of Glucose 6 phosphatase isomerase expression in HeLa cell lysate.